



ACL DIRECT LINK

"ACL DIRECT LINK PROVIDES A NICE INTERFACE TO SAP, INTERPRETING THE DATA WELL AND LAYING IT OUT IN PLAIN ENGLISH, WHICH MAKES THE RESULTS SO SIMPLE TO UNDERSTAND - EVEN FOR A COMPLETE NOVICE TO SAP SYSTEMS."

JACK TIWARI, CISA, CRISC, CHIEF AUDIT EXECUTIVE,
EISAI PHARMACEUTICALS

PAIN-FREE SAP® ERP DATA ACCESS, SELECTION AND EXTRACTION

ACL™ DIRECT LINK

Accessing your company's SAP® ERP data doesn't need to be a painful, slow and incredibly involved process. Establish autonomy with ACL™ Direct Link, a data extraction add-on that eliminates the challenges associated with accessing SAP ERP systems. Direct Link's sophisticated access, selection and extraction capabilities removes the need for IT resources to perform complex data pulls and eliminates wrestling matches with SAP data extraction portals. Consider what life would be like if all that was involved were a few simple clicks.

Direct, Seamless Access

Gain independence and access to SAP data anytime you need to - daily, weekly or monthly. You choose.

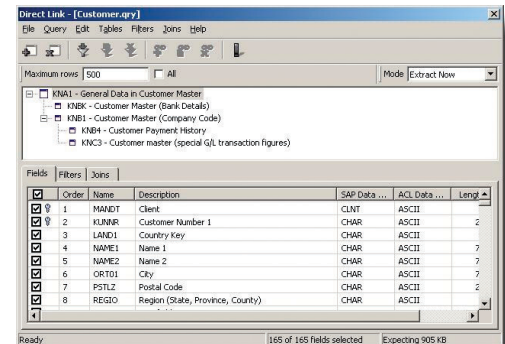
- **Read-only queries** – ensure that production data cannot be altered and that data integrity is always maintained.
- **Table and field descriptions** – displayed in the language selected when logging on to the SAP system.
- **SAP certified** – for integration with your SAP ERP system.
- **Direct Link**– uses SAP security to determine access rights.
- **Minimal impact on SAP systems** – equivalent to using SAP's own data access tools.

Streamlined, Data Selection

Direct connectivity gives you the access to select the data fields you need. Connect to your SAP ERP systems through a secure SAP interface and select exactly the data you need or setup and click "run" on predefined scripts. It's that easy.

- **Bring together a variety of tables into single view** – for increased visibility into your business transactions.
- **Select individual fields and apply filters**– to obtain the data you need.
- **Accelerate routine data analysis procedures**– by incorporating Direct Link SAP ERP data retrieval into ACL scripts.
- **Quickly locate specific tables and fields**– by using powerful browsing and search tools.
- **Drill down by application area** or search through tables and fields by name or description.

Obtain only the data you need by selecting individual fields.





ABOUT ACL

ACL delivers technology solutions that are transforming audit and risk management to give organizations unprecedented control over their business.

Our integrated family of products—including our cloud-based governance, risk and compliance (GRC) solution and flagship data analytics products—are used at all levels of the enterprise to help maximize growth opportunities by identifying and mitigating risk, protecting profits, and accelerating performance.

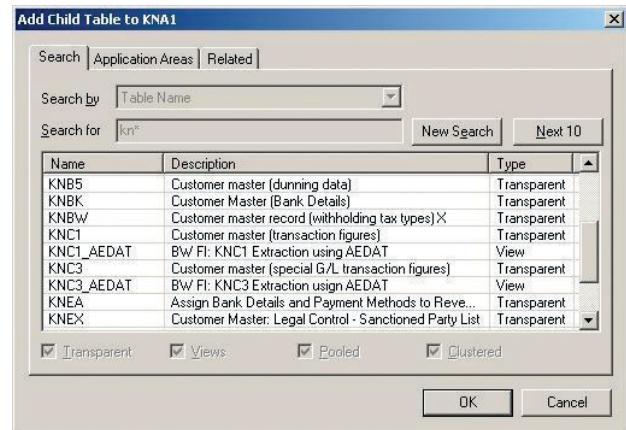
Thanks to 25 years of experience and our consultative approach, we implement flawlessly so customers realize concrete business results fast at low risk. Our actively engaged community of more than 14,000 customers around the globe—including 89% of the Fortune 500 and hundreds of governments—tells our story best.

Optimized, Data Extraction

Save time and improve productivity by eliminating the need to define and prepare data after it is extracted. Getting lost in millions of records is a thing of the past.

- **During the retrieval process**— Direct Link formats SAP data for use within ACL™ Analytics or ACL™ Analytics Exchange (AX).
- **Direct Link**— gives you the ability to execute queries on your SAP ERP system and extract the results. You can extract online or offline, depending on file size.

View SAP tables through the Direct Link interface.



Technical Specifications

ACL Direct Link can be used in conjunction within ACL™ Analytics Exchange and/or ACL™ Analytics as an add-on application.

Supported Operating Systems:

- Microsoft Windows® 7 (32-bit and 64-bit)
- Microsoft Windows XP (SP3)

Supported SAP Systems

- SAP R/3 Version 3.1H to 4.7 or SAP ECC Version 5.0 to 6.0

Client System Requirements:

- SAP GUI version 7.2 or later
- ACL™ Analytics or AX™ Core server must be installed prior to installing the Client component.

SAP Table Types

- Direct Link can access the following SAP table types: Cluster, Pooled, Transparent and Database View.

Interested in learning more about our products and services?

Call 1-888-669-4225 to speak with a representative

Visit our website at acl.com

Email us at info@acl.com